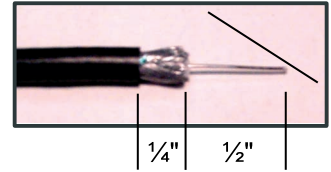


COMPRESSOR® COMPRESSION BNC CONNECTOR

Step 1:

Prepare cable as illustrated. Trim center conductor on a bias.



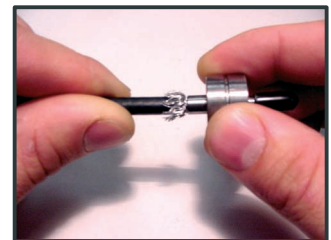
Step 2:

Pull back all shielding except for foil on dielectric.



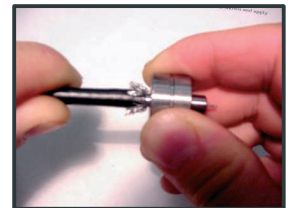
Step 3:

Insert dielectric into blunt end of prep tool and turn to smooth out high points of foil.



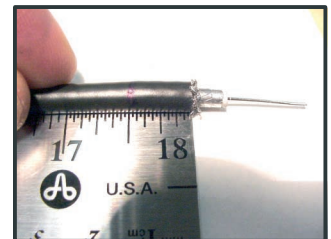
Step 4:

Run the sharp side of prep tool between braid and dielectric full length and turn to loosen braid for easier insertion of connector.



Step 5:

Trim off excess braid and mark cable jacket 15/32" from jacket end.



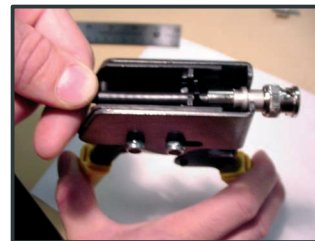
Step 6:

Insert cable into connector with a twisting motion until connector sleeve lines up with jacket mark (15/32").



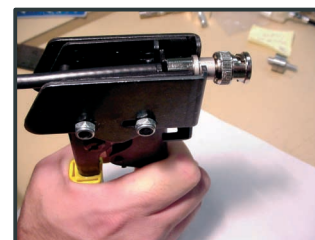
Step 7:

Place connector and cable squarely into nest of compression tool as shown.



Step 8:

Apply pressure to the tool to complete the operation.



Note:

The prep tool can also be used as a measuring aid.

